

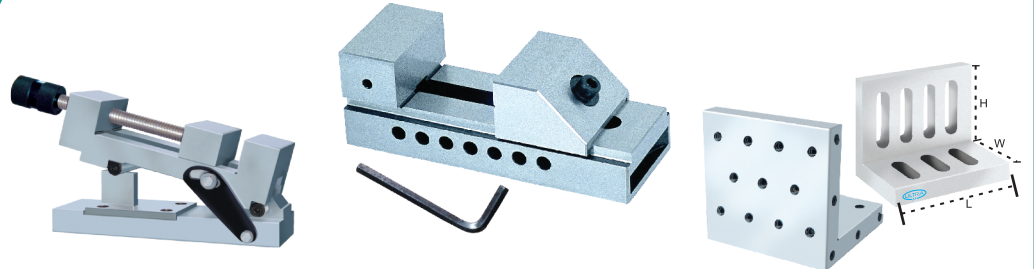
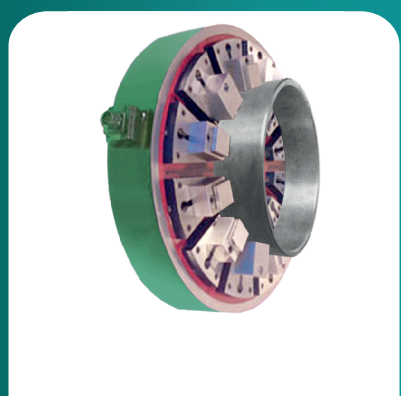


PRICE LIST

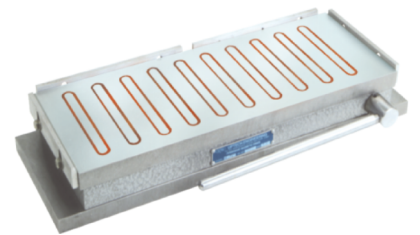
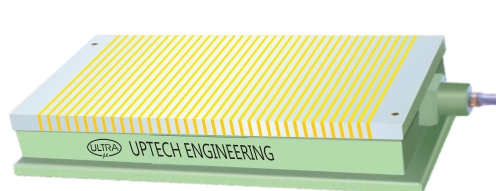
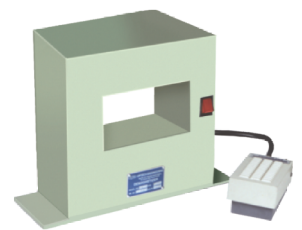
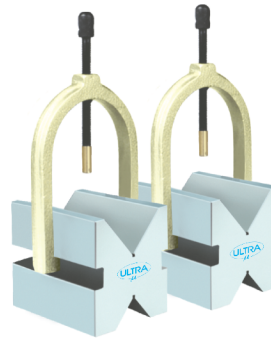
WITH EFFECT FROM 01 - 04 - 2021

UPTECH ENGINEERING

An ISO 9001 : 2015 Certified Company,



1mm MS. & 0.5mm Brass



Brand Precision Inspection Instruments & Magnetic Products & Machine Shop Aids
www.uptechengineering.com

		CAT NO.	SIZE (MM)	PRICE(Rs.)	
1. SERIES UL - 320 "ULTRA" BRAND HARDENED & GROUND MAGNETIC "V" BLOCK. [HARDEN] ALL SIDES ARE HARDENED		UL 32001 Hard	45L X 40W X 55H [2"]	4095 / Pair	
		UL 32002 Hard	75L X 56W X 75H [3"]	8100 / Pair	
		UL 32003 Hard	100L X 70W X 95H [4"]	13150 / Pair	
		UL 32004 Hard	150L X 75W X 100H [6"]	22050 / Pair	
		Having bigger one "V" only	UL 32005 Hard	200L X 125W X 150H [8"]	36850 / Pair
			UL 32006 Hard	160L X 125W X 130H [SPL 6"]	28875 / Pair
2. SERIES UL - 101 "ULTRA" BRAND MAGNETIC "V" BLOCKS SOFT.		UL 10101 Soft	45L X 40W X 55H 2"	3675 / Pair	
		UL 10102 Soft	75L X 56W X 75H 3"	7140 / Pair	
		UL 10103 Soft	100L X 70W X 95H 4"	10920 / Pair	
		UL 10104 Soft	150L X 75W X 100H 6"	19950 / Pair	
		UL 10105 Soft	200L X 125W X 150H 8"	33600 / Pair	
			(8" Having bigger one "V" only)		
3. SERIES UL - 101 "ULTRA" BRAND LEAKPROOF MAGNETIC "V" BLOCKS. ALL SIDES ARE HARDENED		All Sides Hardend (Leak Proof Magnetic V Block)			
		UL 10108	120L X 70W X 95H	15950 / Pair	
		UL 10109	170L X 75W X 100H	27000 / Pair	
4. SERIES UL - 201 "ULTRA" BRAND MAGNETIC RECTANGULAR BLOCKS		(Without On-Off Type)	UL 20101Soft	25L X 25W X 25H	1890 / Pair
		UL 20102Soft	75L X 56W X 60H	6500 / Pair	
		UL 20103Soft	100L X 70W X 70H	10000 / Pair	
		UL 20104Soft	150L X 70W X 85H	18500 / Pair	
		UL 20102Hard	75L X 56W X 60H	7650 / Pair	
		UL 20103Hard	100L X 70W X 70H	12450 / Pair	
		UL 20104Hard	150L X 70W X 85H	20750 / Pair	
5. SERIES UL - 202 "ULTRA" MAGNETIC HOLDER		UL 20201Soft	110L X 110W X 140H	12300 / No.	
		UL 20201Hard	110L X 110W X 140H	15750 / No.	
6. SERIES UL - 204 "ULTRA" MAGNETIC VICE		UL 20401	110L X 180W X 75H	On Request	
		UL 20402	160L X 225W X 90H	On Request	

		CAT NO.	SIZE (MM)	PRICE(Rs.)
7. SERIES UL - 103 "ULTRA" HARDENED & GROUND "V" BLOCKS.		UL 10301	65L X 150W X 75H [2"]	12350 / Pair
		UL 10302	65L X 175W X 100H [3"]	16000 / Pair
		UL 10303	75L X 200W X 125H [4"]	23700 / Pair
8. SERIES UL - 104 "ULTRA" HARDENED & GROUND "V" BLOCKS		UL 10401	75L X 120W X 60H	10000 / Pair
		UL 10402	100L X 150W X 75H	15000 / Pair
		UL 10403	125L X 200W X 100H	29450 / Pair
9. SERIES UL - 105 "ULTRA" HARDENED & GROUND "V" BLOCKS WITH CLAMP		UL 10500	25L X 20W X 20H	2250 / Pair
		UL 10501	50L X 40W X 40H	3300 / Pair
		UL 10502	50L X 50W X 50H	3600 / Pair
		UL 10503	63L X 50W X 50H	4250 / Pair
		UL 10504	63L X 80W X 80H	5200 / Pair
		UL 10505	63L X 100W X 100H	9675 / Pair
		UL 10506	70L X 140W X 140H	18800 / Pair
		UL 10507	80L X 63W X 63H	4500 / Pair
		UL 10508	100L X 80W X 80H	6700 / Pair
		UL 10509	150L X 200W X 200H	44500 / Pair
UL 10510	200L X 200W X 200H	54000 / Pair		
10. SERIES UL - 108 "ULTRA" HARDENED & GROUND TOOL-ROOM "V" BLOCKS		UL 10801	90L X 48W X 48H	6500 / No.
11. SERIES UL - 109 "ULTRA" HARDENED & GROUND TOOL-ROOM "V" BLOCKS		UL10901	65L X 70W X 50H	6175 / Pair
12. SERIES UL - 110 "ULTRA" ROLLER BEARING "V" BLOCK		UL 11001	150L X 80W X 100H	9870 / Pair
		UL 11002	150L X 60W X 100H	9870 / Pair
		UL 11003	230L X 100W X 150H	20000 / Pair
13. SERIES UL - 113 "ULTRA" HARDENED & GROUND TOOL-ROOM "V" BLOCKS		UL 11301	40L X 45W X 35H	5925 / Pair
		UL 11302	55L X 60W X 40H	7000 / Pair
		UL 11303	65L X 70W X 45H	10600 / Pair
		UL 11304	90L X 125W X 70H	16050 / Pair

CAT NO.

SIZE (MM)

PRICE(Rs.)

14. SERIES UL - 501
"ULTRA"
UNIVERSAL
SURFACE
GAUGE



UL 50101

80L X 65W X 300H

1500 / No.

UL 50102

100L X 85W X 450H

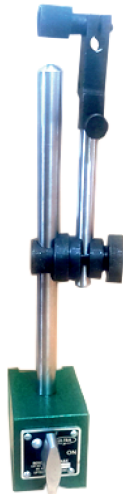
1950 / No.

UL 50103

110L X 90W X 600H

3000 / No.

15. SERIES UL - 504
"ULTRA" MAGNETIC
BASE



UL 50401

UL 50401

60L X 50W X 60H

2165 / No.

UL 50405

70L X 48W X 64H

5000 / No.

UL 50411

60L X 50W X 60H

1575 / No.

UL 50412

60L X 50W X 60H

2000 / No.

UL 50413

70L X 48W X 64H

3000 / No.

UL 50415

60L X 50W X 60H

2325 / No.

UL 50416

70L X 48W X 64H

3250 / No.

UL 50417

35L X 30W X 35H

2125 / No.

UL 50418

290L X 110W X 101H

1775 / No.

UL 50419

175L X 56W X 51H

1300 / No.



UL 50411



UL 50412



UL 50405



UL 50415



UL 50416



UL 50417



UL 50413



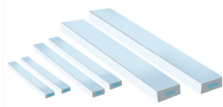
UL 50418



UL 50419

CENTRICATOR

16. SERIES UL - 301
"ULTRA"
PARALLEL BLOCKS
(Sizes are nominal)



Accuracy For Paralism & Flatness
is 0.015 mm up to 200mm & 0.030 mm up to 450mm

CAT NO.	SIZE (MM)	PRICE(Rs.)	CAT NO.	SIZE (MM)	PRICE(Rs.)
UL 30101	100L X 10W X 5H	1200 / Pair	UL 30127	250L X 25W X 20H	3375 / Pair
UL 30102	100L X 12W X 5H	1200 / Pair	UL 30128	250L X 30W X 20H	3380 / Pair
UL 30103	100L X 15W X 5H	1250 / Pair	UL 30129	250L X 40W X 25H	3450 / Pair
UL 30104	100L X 20W X 5H	1300 / Pair	UL 30130	250L X 50W X 25H	4350 / Pair
UL 30105	150L X 10W X 6H	1700 / Pair	UL 30131	250L X 50W X 30H	4350 / Pair
UL 30106	150L X 12W X 6H	1700 / Pair	UL 30132	250L X 60W X 30H	4500 / Pair
UL 30107	150L X 15W X 6H	1700 / Pair	UL 30133	300L X 25W X 25H	4500 / Pair
UL 30108	150L X 20W X 6H	1700 / Pair	UL 30134	300L X 30W X 25H	4500 / Pair
UL 30109	150L X 10W X 10H	1500 / Pair	UL 30135	300L X 40W X 25H	4650 / Pair
UL 30110	150L X 12W X 10H	1500 / Pair	UL 30136	300L X 50W X 25H	4950 / Pair
UL 30111	150L X 15W X 10H	1500 / Pair	UL 30137	300L X 40W X 35H	4700 / Pair
UL 30112	150L X 20W X 10H	1500 / Pair	UL 30138	300L X 50W X 35H	4950 / Pair
UL 30113	150L X 15W X 15H	1500 / Pair	UL 30139	300L X 60W X 35H	6250 / Pair
UL 30114	150L X 20W X 15H	1500 / Pair	UL 32040	300L X 70W X 35H	6250 / Pair
UL 30115	150L X 25W X 15H	1500 / Pair	UL 30141	350L X 30W X 40H	9130 / Pair
UL 30116	150L X 30W X 15H	1600 / Pair	UL 30142	350L X 40W X 40H	9130 / Pair
UL 30117	200L X 20W X 15H	2000 / Pair	UL 30143	350L X 50W X 40H	9200 / Pair
UL 30118	200L X 25W X 15H	2000 / Pair	UL 30144	350L X 70W X 40H	9350 / Pair
UL 30119	200L X 30W X 20H	2650 / Pair	UL 30145	400L X 50W X 50H	9240 / Pair
UL 30120	200L X 40W X 20H	2650 / Pair	UL 30146	400L X 60W X 50H	9300 / Pair
UL 30121	200L X 20W X 25H	2650 / Pair	UL 30147	400L X 75W X 50H	11770 / Pair
UL 30122	200L X 30W X 25H	2650 / Pair	UL 30148	400L X 100W X 50H	11950 / Pair
UL 30123	200L X 40W X 25H	3200 / Pair	UL 30149	450L X 50W X 50H	11770 / Pair
UL 30124	200L X 50W X 25H	3300 / Pair	UL 30150	450L X 60W X 50H	11770 / Pair
UL 30125	250L X 15W X 20H	3375 / Pair	UL 30151	450L X 75W X 50H	14300 / Pair
UL 30126	250L X 20W X 20H	3375 / Pair	UL 30152	450L X 100W X 50H	14500 / Pair

UPTECH ENGINEERING

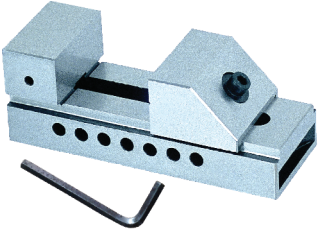
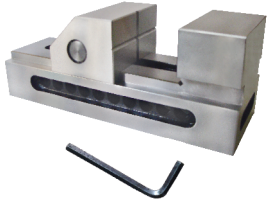
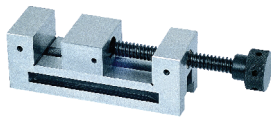
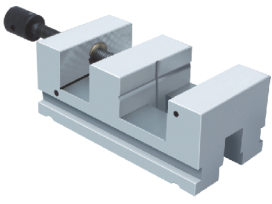
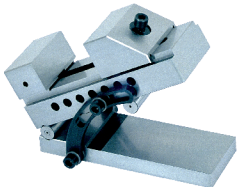
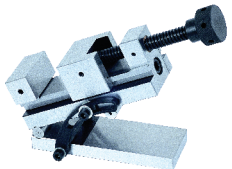
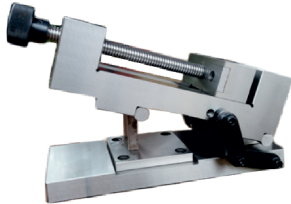
Gat No. 274, Nanekar Wadi,
Pune - Nashik Highway,
Opp. Alandi Phata, Chakan,
Tal.: Khed, Dist. : Pune 410 501
INDIA

Telephone No :+91 9373066278

Cell : +91 9689002961

Email : info@uptechengineering.com

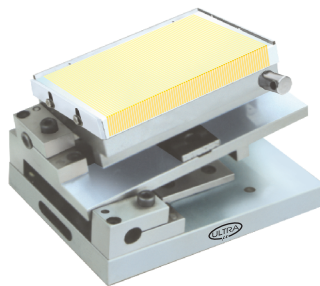
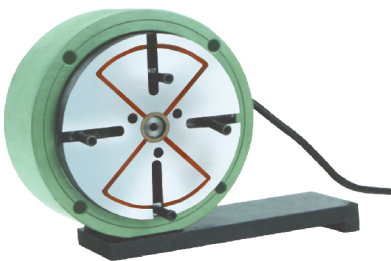
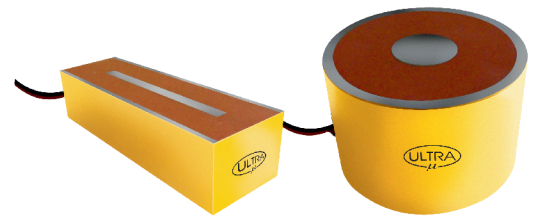
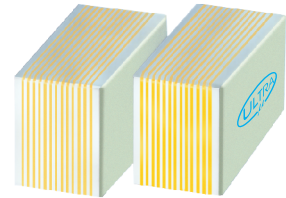
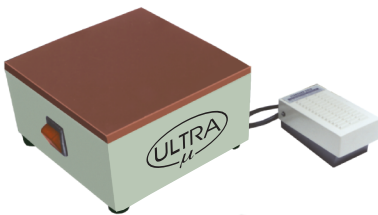
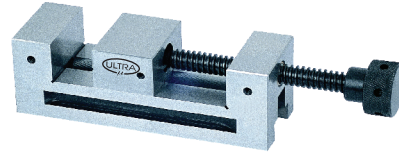
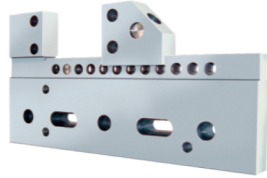
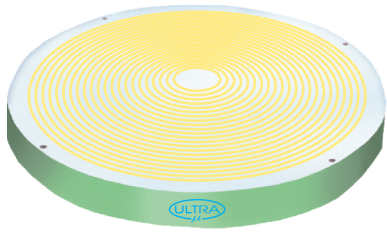
Website : www.uptechengineering.com

		CAT NO.	SIZE (MM)	JAW OPENING	PRICE (Rs.)
17. SERIES UL - 828 "ULTRA" TOOL MAKER VICE (ECONOMY MODEL)		UL 82801	175L X 63W X 63H	[0-85]	6100 / No.
		UL 82802	190L X 73W X 73H	[0-100]	8100 / No.
		UL 82803	235L X 88W X 88H	[0-125]	11500 / No.
18. SERIES UL - 310 "ULTRA" HARDENED AND GROUND PRECISION GRINDING VICE		UL 31001	150L X 48W X 60H	[0-75]	5000 / No.
		UL 31002	180L X 63W X 70H	[0-90]	8000 / No.
		UL 31003	200L X 73W X 80H	[0-100]	9100 / No.
		UL 31004	235L X 96W X 96H	[0-130]	14500 / No.
19. SERIES UL - 829 "ULTRA" GRINDING VICE SCREW TYPE (ECONOMY MODEL)		UL 82901	155L X 50W X 50H	[0-65]	4350 / No.
		UL 82902	190L X 63W X 63H	[0-85]	7575 / No.
		UL 82903	210L X 73W X 73H	[0-100]	9300 / No.
		UL 82904	250L X 88W X 88H	[0-125]	14950 / No.
20. SERIES UL - 311 "ULTRA" HARDENED AND GROUND PRECISION GRINDING VICE Screw type		UL 31101	150L X 50W X 50H	[0-70]	7500 / No.
		UL 31102	175L X 60W X 55H	[0-80]	8400 / No.
		UL 31103	190L X 75W X 65H	[0-85]	10600 / No.
		UL 31104	210L X 95W X 75H	[0-100]	13600 / No.
21. SERIES UL - 831 "ULTRA" TOOL MAKER SINE VICE (ECONOMY MODEL)		UL 83101	175L X 63W X 93H	[0-85]	10750 / No.
		UL 83102	190L X 73W X 104H	[0-100]	15125 / No.
		UL 83103	235L X 88W X 122H	[0-125]	22550 / No.
22. SERIES UL - 830 "ULTRA" SINE VICE SCREW TYPE (ECONOMY MODEL)		UL 83001	175L X 63W X 95H	[0-85]	12575 / No.
		UL 83002	235L X 88W X 125H	[0-120]	22850 / No.
		UL 83003	285L X 125W X 154H	[0-160]	34550 / No.
23. SERIES UL - 312 "ULTRA" SINE VICE		UL 31201	190L X 65W X 85H	[0-80]	14900 / No.
		UL 31202	235L X 76W X 100H	[0-100]	18050 / No.
		UL 31203	265L X 95W X 105H	[0-125]	26500 / No.
		UL 31204	290L X 120W X 120H	[0-145]	36100 / No.
		UL 31205	310L X 140W X 145H	[0-160]	49600 / No.

	CAT NO.	SIZE (MM)	PRICE(Rs.)
24. SERIES UL - 316 "ULTRA" STAINLESS STEEL EDM VICE	 UL 31601	270L X 25W X 145H	28000 / No.
	UL 31602	130L X 35W X 90H	16750 / No.
25. SERIES UL - 401 "ULTRA" SINE TABLE IS : 5939 - 1970	 UL 40101	150L X 120W X 65H	15000 / No.
	UL 40102	250L X 150W X 65H	25850 / No.
	UL 40103	300L X 150W X 65H	36000 / No.
	UL 40104	450L X 150W X 65H	48100 / No.
26. SERIES UL - 402 "ULTRA" SINE TABLE IS : 5939 - 1970	 UL 40201	150L X 120W X 95H	26400 / No.
	UL 40202	250L X 150W X 95H	39200 / No.
	UL 40203	300L X 150W X 95H	52000 / No.
	UL 40204	450L X 200W X 105H	59600 / No.
27. SERIES UL - 403 "ULTRA" MAGNETIC SINE TABLE IS : 5939 - 1970 (With Fine Pitch Magnetic Chuck)	 UL 40301	150L X 120W X 105H	21150 / No.
	UL 40302	250L X 150W X 105H	40700 / No.
	UL 40303	300L X 150W X 105H	49500 / No.
	UL 40304	450L X 150W X 105H	59650 / No.
	UL 40305	450L X 200W X 105H	68000 / No.
28. SERIES UL - 404 "ULTRA" MAGNETIC COMPOUND SINE TABLE IS : 5939 - 1970 (With Fine Pitch Magnetic Chuck)	 UL 40401	150L X 120W X 155H	36750 / No.
	UL 40402	250L X 150W X 155H	53500 / No.
	UL 40403	300L X 150W X 155H	58000 / No.
	UL 40404	450L X 150W X 155H	71750 / No.
	UL 40405	450L X 200W X 150H	84500 / No.

	CAT NO.	SIZE (MM)	PRICE(Rs.)
29. SERIES UL - 601 "ULTRA" HARDENED & GROUND KNIFE-EDGE STRAIGHT EDGE.(Grade B)	UL 60101	50L X 30W X 8T [2"]	1025 No.
	UL 60102	75L X 35W X 8T [3"]	1625 No.
	UL 60103	100L X 40W X 10T [4"]	1835 No.
	UL 60104	150L X 40W X 10T [6"]	2450 No.
	UL 60105	200L X 50W X 12T [8"]	3450 No.
	UL 60106	250L X 50W X 12T [10"]	3900 No.
	UL 60107	300L X 60W X 12T [12"]	4325 No.
	UL 60108	500L X 50W X 15T [20"]	13000 No.
	UL 60109	600L X 60W X 20T [24"]	15250 No.
30. SERIES UL - 602 "ULTRA" HARDENED & GROUND STEEL STRAIGHT EDGE Accuracy As Per IS : 2013-1980 (Grade B)	UL 60201	100L X 15W X 5T [4"]	2100 No.
	UL 60202	160L X 20W X 8T [6"]	4950 No.
	UL 60203	300L X 35W X 12T [12"]	8250 No.
	UL 60204	500L X 50W X 15T [20"]	12870 No.
	UL 60205	800L X 80W X 20T [32"]	16500 No.
	UL 60206	1000L X 100W X 20T [40"]	23100 No.
	UL 60207	1500L X 100W X 20T [60"]	On Request
31. SERIES UL - 308 "ULTRA" HARDENED & GROUND PRECISION ANGLE PLATE WITHOUT CLAMP	UL 30801	100L X 100W X 115H	7000 / No.
32. SERIES UL - 309 "ULTRA" HARDENED & GROUND PRECISION ANGLE PLATE (WITHOUT CLAMP)	UL 30901	150L X 150W X 115H	7500 / No.
	UL 30902	150L X 150W X 150H	13500 / No.
	UL 30903	225L X 150W X 150H	17300 / No.
	UL 30904	300L X 225W X 150H	31100 / No.
For Slotted Angle Plate Price On Request			
33. SERIES UL - 813 "ULTRA" MAGNETIC SEPARATOR ON OFF TYPE	UL 81301	Ø1 X 6 Inch	3300 No.

	CAT NO.	SIZE (MM)	PRICE(Rs.)
34. SERIES UL - 801 "ULTRA" PLATE TYPE DEMAGNETIZES (NOT A CONTINUOUS DUTY TYPE)	UL 80101	150 X 100	4500 No.
	UL 80102	150 X 150	5000 No.
	UL 80103	150 X 225	7950 No.
	UL 80104	150 X 300	8500 No.
	UL 80105	350 X 350	26250 No.
35. SERIES UL - 802 "ULTRA" COIL TYPE DEMAGNETIZES WITH HANDEL (NOT A CONTINUOUS DUTY TYPE)	UL 80201	Ø 100	13800 No.
	UL 80202	Ø 150	19000 No.
	UL 80203	Ø 200	24000 No.
	UL 80204	Ø 300	33500 No.
	UL 80205	100 L X 100 W X 50 H	18250 No.
	UL 80206	200 L X 200 W X 50 H	41000 No.
	UL 80207	200 L X 200 W X 100H	60500 No.
36. SERIES UL - 803 "ULTRA" PLATE TYPE MINI DEMAGNETIZES WITH HANDEL	UL 80304	150 X 100	4850 No.
	UL 80305	150 X 150	5500 No.
37. SERIES UL - 205 "ULTRA" POT MAGNET	UL 20500	Ø 16 x 18 H	On Request
	UL 20501	Ø 18 x 16 H	On Request
	UL 20502	Ø 22 x 20 H	On Request
	UL 20503	Ø 27 x 25 H	On Request
	UL 20504	Ø 35 x 30 H	On Request
	UL 20505	50 L x 25 W x 25 H	On Request
	UL 20506	70 L x 25 W x 25 H	On Request
38. SERIES UL - 206 "ULTRA" BUTTON MAGNET	UL 20600	Ø 10 X 10 H	On Request
	UL 20601	Ø 12 X 10 H	On Request
	UL 20602	Ø 20 X 12 H	On Request
	UL 20603	Ø 25 X 15 H	On Request



UPTECH ENGINEERING

Gat No. 274, Nanekar Wadi,
Pune - Nashik Highway,
Opp. Alandi Phata, Chakan,
Tal.: Khed, Dist. : Pune 410 501
INDIA

Telephone No :+91 9373066278
Cell : +91 9689002961
Email : info@uptechengineering.com
Website : www.uptechengineering.com